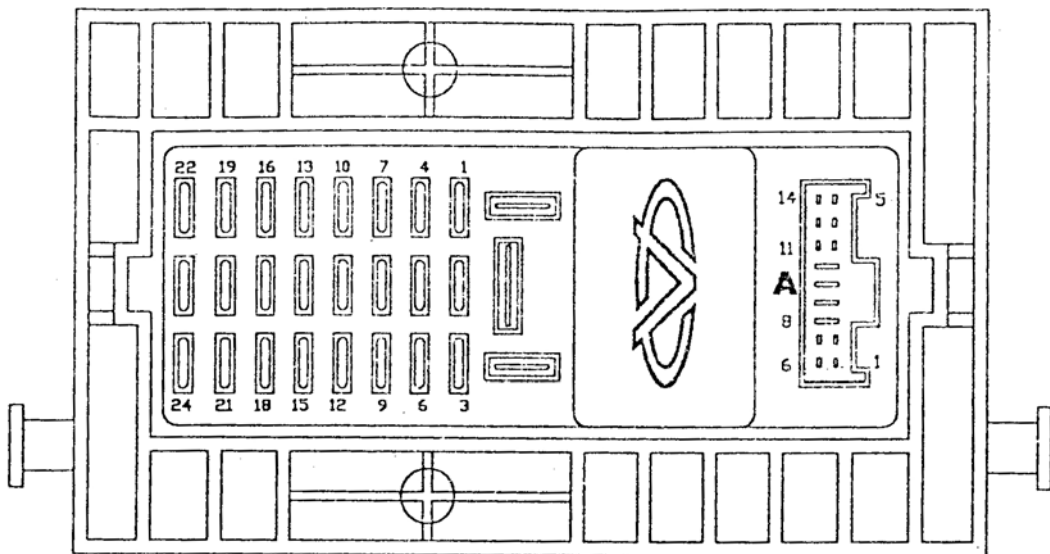
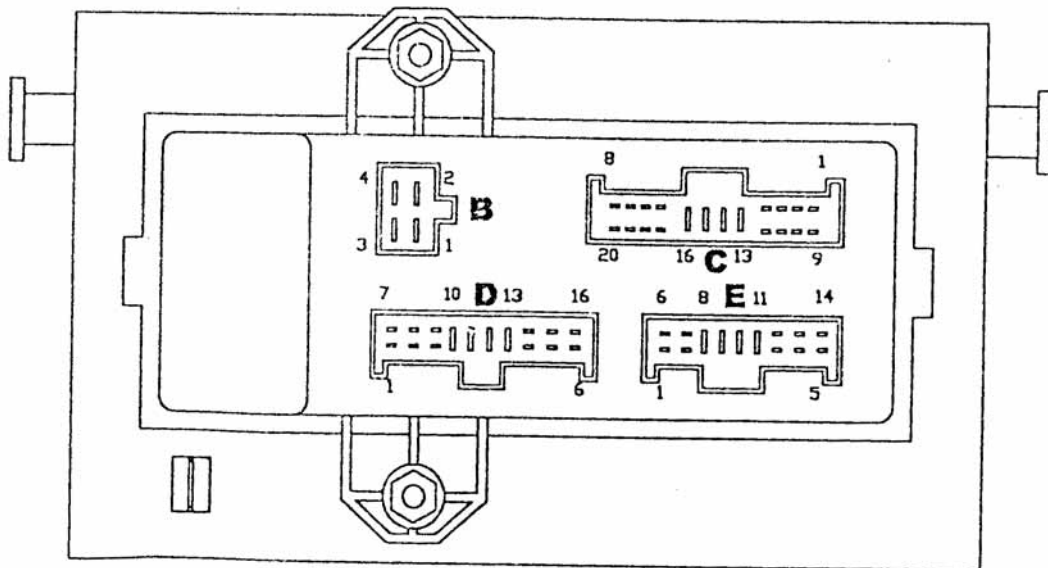


Central Electrical Box Connector Position



(FRONT SIDE VIEW)



(BACK SIDE VIEW)

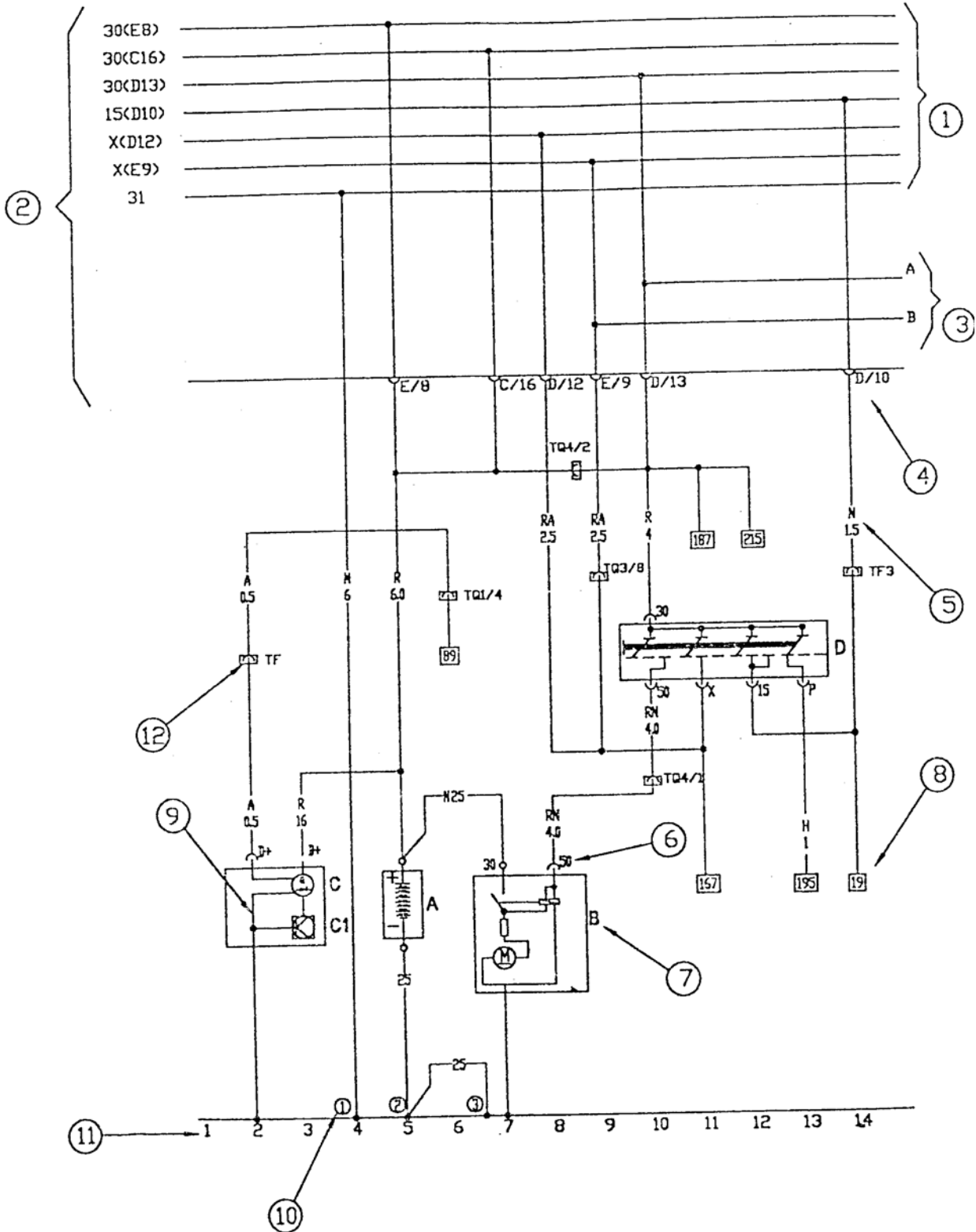
Central Electrical Box Connector, Pin and Function

Connector	Connector Pin Function	Circuit No.
A	01.Sunroof, Cab Freight Calculator (+15)	—
	02.ECUA/C Signal Input	—
	03.—	138
	04.Luggage Compartment Lamp, Radio, Ceiling Lamp	—
	05.—	247
	06.—	—
	07.—	—
	08.—	—
	09.Rear Window Preheat Switch, Rear Mirror Defrost Switch	—
		134
	10.—	—
	11.Lamp Switch Illumination, ABS Diagnostic Power (+15)	132
	12.—	—
	13.Combination Instrument Power Positive (+30)	192
14. Brake Switch	—	
B	01.—	—
	02.—	—
	03.—	—
	04.A/C Relay, Blower, Interior Circulate Solenoid Switch	51
C	01.Horn Switch	142
	02.Fog Lamp Relay (Positive)	219
	03.Fog Lamp Switch	220
	04.Horn Relay Signal (30)	140
	05.Dual Pitch Horn	141
	06.Wiper Motor (Positive)	154
	07.Panel Indicator, Switch Illumination Light, Light Switch Variable Resistor	209
	08.Back Light Switch	83
	09.—	152
	10.—	—
	11.—	—
	12.Fog Lamp Relay (Positive)	215
	13.—	—
	14.—	—
	15.Thermo Switch, A/C High Pressure Switch	47
	16.Central Electrical Box Power Positive (+30)	6

CIRCUIT__Central Electrical Box Connector, Pin and Function

Connector	Connector Pin Function	Circuit No.
C	17.—	—
	18.Wiper Intermittent Relay	149
	19.License Plate Lamp	210
	20.Mileage Gauge Sensor	81
D	01.—	—
	02.Cigar Lighter	—
	03.Turn Light Switch, Headlight Adjustment Switch	129
	04.—	175
	05.Combination Instrument Positive (+15)	—
	06.Sunroof, Cab Freight Calculator (+30)	116
	07.Ground	—
	08.—	53
	09.Rear View Mirror, Lifter Module, Position Select Box (+15)	—
	10.Ignition Switch (+15)	272
	11.Central Locking Controller, Glass Lifter Module (+30)	14
	12.Ignition Switch, Wiper Switch (+15)	260
	13.Central Electrical Box Power Positive (+30)	8
14.—	10	
15.—	—	
16.—	—	
E	01.—	248
	02.—	—
	03.—	—
	04.A/C Compressor Magnetic Clutch	137
	05.—	—
	06.—	—
	07.—	—
	08.Central Electrical Power Positive (+30)	—
	09.Ignition Switch (+15)	5
	10.Lamp Switch	9
	11.—	207
	12.Horn Relay	—
	13.—	139
	14.—	—

CIRCUIT MANUAL EXPLANATION



Compiling Explanation

1. Central Electrical Box Main Circuit Board Circuit No.
 - 30 : No Fuse, Positive Goes Directly From Battery
 - 15 : No Fuse, Positive Goes To Ignition----Start Switch
 - X : No Fuse, Positive Goes To Ignition ----Start Switch, And Being Cut Off During Starting
 - 31 : Fictitious Ground, This wire actually exists or does not actually exist.
 - Example: 30(E8) defines these 30 hot wires are directly from battery, and come from central electrical box socket E pin No. 8.
 - 30(C16)、 15(D10)、 X(D12)...are similar as 30 (E8)
2. Central Electrical Box Main Circuit Board Block

This block on main circuit board includes fuse, relay and connection interface.
3. Wire routes as follows:
 - coming from right side on previous page
 - going to left side on next page
4. Central Electrical Box Main Circuit Board Pins No.

It will be helpful for locating main circuit board circuit, such as E/8 indicates the 8th pin on central electrical box socket E.
5. Wire colors and cross-area, square millimeter
6. Connection Symbol

This symbol is signed on component.
7. Parts or components name (illustrated on left bottom of each page).
8. symbol for wire continuing

Number in square form indicates wire number or appropriate extending wire no.
9. Internal wire

Used for locating internal wire. This wire may actually exist or does not exist.
10. Ground point

Indicated by number in circle, and the point is also indicated on circuit.
11. Circuit number

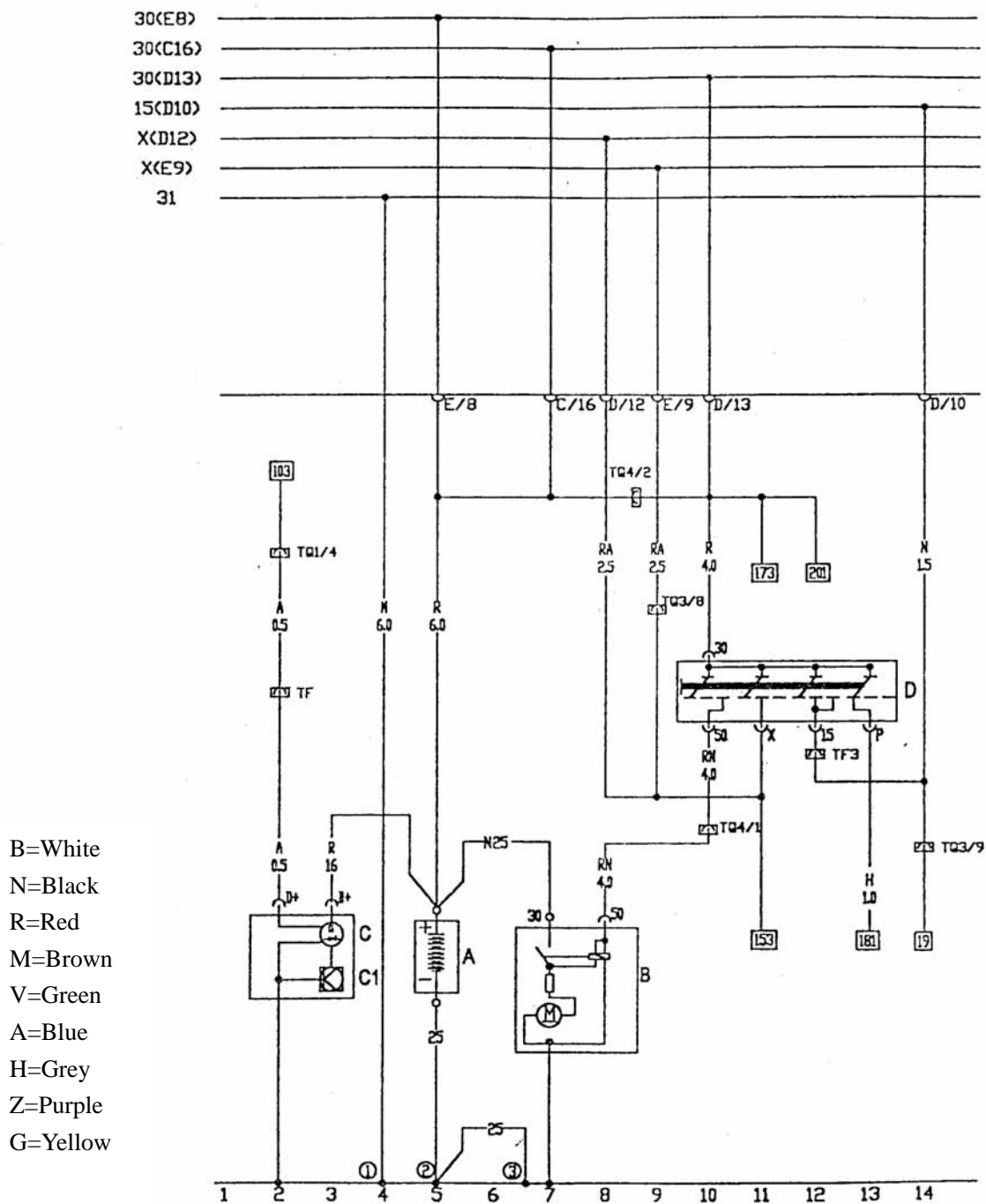
Used to locating component and interrupted wire connecting point.
12. Multi-hole connector connecting points

Socket terminal numbers are given.

CONTENT

—Battery, Alternator, Starter Motor, Ignition Switch.....	01
—SPI EI System (MARELLI).....	02
—MPI EI(Electronic Injection) (MARELLI).....	02
—A/C Unit, Control Head, Cooling System.....	03
—A/C Switch, Interior Circulate Solenoid, High & Low Pressure Switch.....	04
—Oil Pressure Switch, Coolant Temperature Sensor, Manual Brake Indicator Switch, Mileage Gauge Sensor.....	05
—Radio and 6 Speakers.....	06
—IP (Instrument Panel) and MFA.....	07
—Front Fog Light, Cigar Lighter, A/C Panel Indicator.....	08
—Rear Window Heating System, Dual Pitch Horn, Compressor Magnetic Clutch.....	09
—Wiper, Horn Button, Washer.....	10
—Headlight, Front Position Light, Light Relay.....	11
—Turn Light, Parking Light Switch, Emergency Warning Relay.....	12
—Taillight, Side Light, Brake Light.....	13
—Light Switch.....	14
—Back Light, Rear Fog Light.....	15
—Headlight Adjuster.....	16
—Front & Rear Interior Light, Luggage Compartment Illumination Light, Sun Visor Light, License Plate Light, Door Touch Switch.....	17
—Central Locking.....	18
—Power Mirror.....	19
—ABS.....	20
—Power Glass Lifter Control Unit.....	21
—Power Glass Lifter Control Switch.....	22

Battery, Alternator, Starter Motor, Ignition Switch



- B=White
- N=Black
- R=Red
- M=Brown
- V=Green
- A=Blue
- H=Grey
- Z=Purple
- G=Yellow

- A Battery
- B Starter Motor
- C Alternator
- C1 Voltage Regulator
- D Ignition Switch

- 1 G ground, At Ground Carrier Beside Central Electrical Box
- 2 Body Ground, Near Battery
- 3 Engine Ground Point, Located Beside Transmission
- TQ4 2 Holes Match Connector